

INPUT VOLTAGE : 110 / 240 VAC
 MAXIMUM CURRENT: 15A PER PHASE
 OPERATING FREQUENCY: 50 - 400 Hz
 OPERATING TEMPERATURE: -40 TO 60 C
 STORAGE TEMPERATURE : -40 TO 100C
 DIELECTRIC WITHSTANDING (LINE - CASE): 1500 V, 60 Hz FOR 1 MINUTE
 VARISTOR VOLTAGE (LINE - NEUT): (387 - 473) V
 WEIGHT: 4.2 LB,

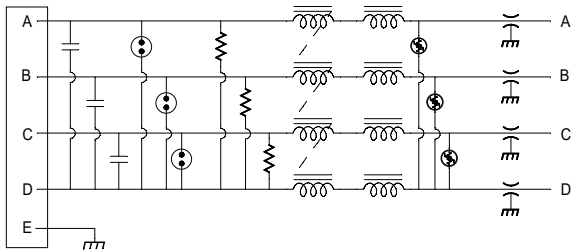
INSERTION LOSS

COMMON MODE

10 KHZ	-- db
100 KHZ	23 db
1.0 MHZ	60 db
10 MHZ	60 db
100 MHZ	60db
1.0 GHZ	55 db

DIFFERENTIAL MODE

10 KHZ	16 db
100 KHZ	37 db
300 KHZ	55 db
1.0 MHZ	60 db
10 MHZ	50 db



JMK, Inc.

SCALE	APPROVED BY	DRWN BY	RDW
DATE 8/23/18		REV DATE	9/6/18
SPECIFICATION			REVISION
			A
TOLERANCE .XX = .01 .XXX = .005		DRAWING NO. ZL-1906-15B	
DIM: INCHES (mm)			