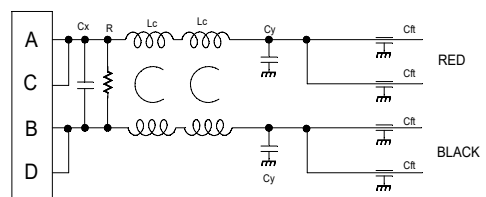


INPUT VOLTAGE : 200 Vdc Max
 MAXIMUM CURRENT : 40A
 OPERATING TEMPERATURE: -40 TO 60 C
 STORAGE TEMPERATURE : -40 TO 100C
 DIELECTRIC WITHSTANDING (LINE - CASE): 800 Vdc FOR 1 MINUTE
 DIELECTRIC WITHSTANDING (LINE - LINE): 300 Vdc FOR 1 MINUTE

WEIGHT: 0.85 LB,

INSERTION LOSS

COMMON MODE		DIFFERENTIAL MODE	
10 KHZ	18 db	10 KHZ	15 db
100 KHZ	42 db	100 KHZ	20 db
1.0 MHZ	55 db	300 KHZ	25 db
10 MHZ	55 db	1.0 MHZ	55 db
100 MHZ	55 db	10 MHZ	60 db
1.0 GHZ	55 db		



SCALE	APPROVED BY	DRWN BY: CYNTHIA G.
DATE 11/18/13		REV DATE 10/24/17
OUTLINE		REVISION C
TOLERANCE DIM: INCHES (mm)	XX = .01 XXX = .005	DRAWING NO. ZF-2194-40