



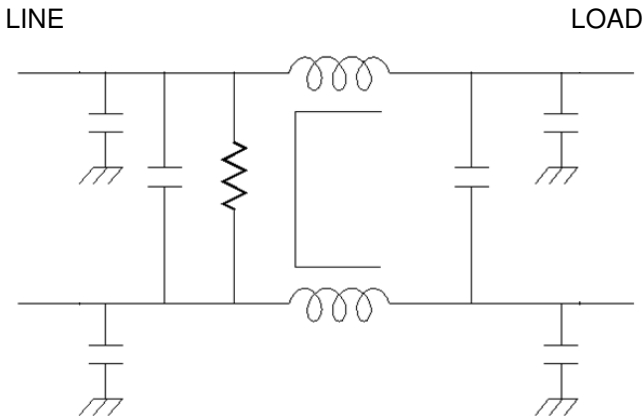
# MM-0637A-50C

This filter features a very small mechanical package with a very good common mode insertion loss and differential loss.

This filter has been designed to operate with severe unbalanced current loading and can withstand up to a 30% unbalance in line and return without degrading the common mode insertion loss. This capability is very useful when the filter is used in dual systems with shared returns.

This filter package is ruggedly designed to operate in automotive as well as telecommunication environments.

Order P/N: MM-0637A-50C



Operating Voltage = \_\_\_\_\_ 400 Vdc Max  
 Operating Current = \_\_\_\_\_ 50 Amps  
 Operating Temperature Range = \_\_\_\_\_ -40 to 50 °C

Dielectric Withstanding Voltage =  
 Line to Line: 707 Vdc for 1 minute  
 Line to Case: 2250 Vdc for 1.0 min

