



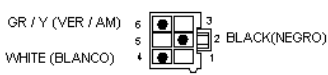
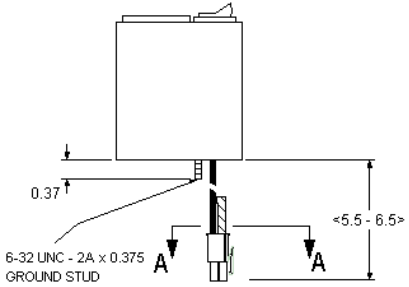
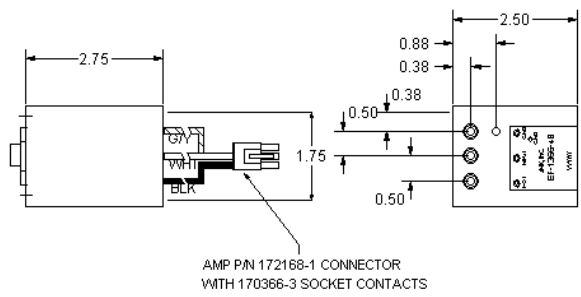
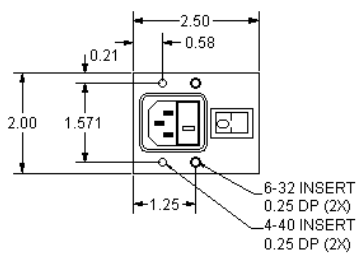
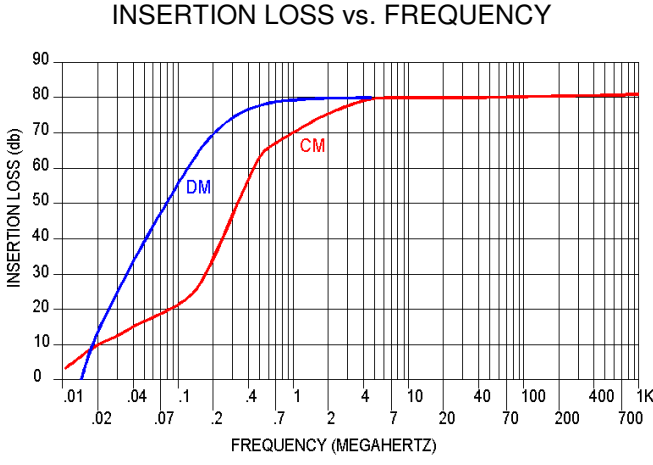
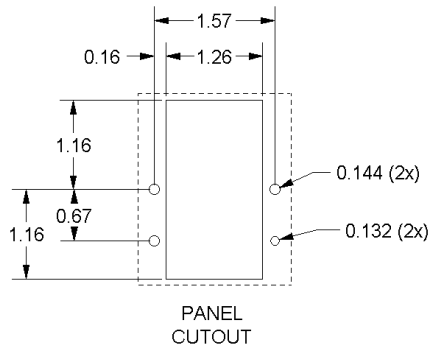
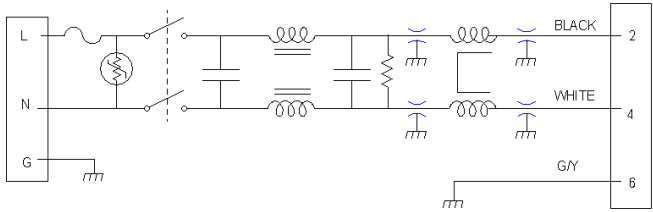
# EF-1366-4B

Operating Voltage = \_\_\_\_\_ 125/250 Vac, 50/60 Hz  
 = \_\_\_\_\_ 125 Vac, 400 Hz  
 Operating Current = \_\_\_\_\_ 4.0 Amps  
 Operating Temperature = \_\_\_\_\_ -20—50°C

Diel. Withstand (Line/Case) = \_\_\_\_\_ -1500 Vac 1 Min  
 Diel. Withstand (Line/Neut) = \_\_\_\_\_ 1500 Vdc Min  
 Capacitance, (Each line—case) = \_\_\_\_\_ 0.015  $\mu$ F  
 Leakage Current = \_\_\_\_\_ 125V, 60 Hz: 0.85 mA Max  
 = \_\_\_\_\_ 125V, 400 Hz: 5.70 mA Max  
 = \_\_\_\_\_ 250 V, 50 Hz: 1.45 mA Max

Varistor Voltage = \_\_\_\_\_ 462—540 V

Calculated MTBF = \_\_\_\_\_ 978,232 Hrs @ 30°C GB



VIEW A-A  
CABLE SIDE OF CONNECTOR

(LADO DE LAS CABLES DE LA CONNECTOR)