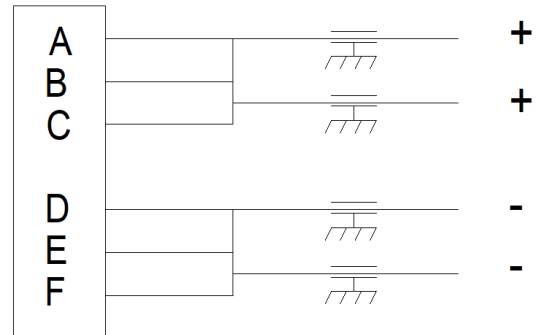


JMK, Inc.

ZH-2359-40B

Max. Operating Voltage: (DC): 80V
Max. Operating Current (DC): 40A
Operating Temp: (-40C) to (80C)
Storage Temp: (-40C) to (100C)
Diel. Withstand (L—C): 150V/1.0 Min.
Diel. Withstand (L—L): 300V/1.0 Min.
Weight: 0.3 LB Max.

TVP00DZ-17-6P



This filter is designed to provide high frequency insertion loss where space is a problem. It is particularly helpful with radiated emissions such as RE102 of Mil-std-461. Different connectors can be substituted. Leads or solder terminals can be used in place of the PCB pins.

